







Photovoltaic Solar Modules

 	<p>2 pcs. Solar Panels 120W Watt Mono Black Hanover</p> <p>Two high-quality solar panels monocrystalline with 19.0 % efficiency Photovoltaic module 120 Wp Watt. For small gardens, camping, self-sufficient power supply ...</p>	<p>Solar cell hailproof covered and sealed with tempered glass. The high-quality module technology also ensures charging on cloudy days.</p> <table><tr><td>Life expectancy</td><td>aprx. 25 years</td></tr><tr><td>System voltage</td><td>12 Volt</td></tr><tr><td>nominal voltage</td><td>14.45V</td></tr><tr><td>idle voltage</td><td>17.74V</td></tr><tr><td>nominal current</td><td>8.3A</td></tr><tr><td>short-circuit current:</td><td>9.11A</td></tr><tr><td>Efficiency</td><td>19.0 %</td></tr><tr><td>Dimensions:</td><td>1010 x 670 x 30mm *</td></tr></table> <p>* Dimensions may vary</p> <p>With sturdy aluminium frame 35mm Connection box at the rear with short connection cables 2.5mm, length 50cm with waterproof MC4 connectors. Ambient temperature: - 20°C to + 45°C S-SOL12122HB</p>	Life expectancy	aprx. 25 years	System voltage	12 Volt	nominal voltage	14.45V	idle voltage	17.74V	nominal current	8.3A	short-circuit current:	9.11A	Efficiency	19.0 %	Dimensions:	1010 x 670 x 30mm *								
Life expectancy	aprx. 25 years																									
System voltage	12 Volt																									
nominal voltage	14.45V																									
idle voltage	17.74V																									
nominal current	8.3A																									
short-circuit current:	9.11A																									
Efficiency	19.0 %																									
Dimensions:	1010 x 670 x 30mm *																									
 	<p>PV Solar Panel 330W Watt Mono SF</p> <p>Monocrystalline solar-module 33V of german production with high degree of efficiency.</p>	<p>High quality monocrystalline solar-cells (tempered glass encapsulated, hailproof) This modern cell technology has a high degree of efficiency and allows charging also at cloudy weather. On the back connecting cables with waterproof MC4 connectors IP67 Made in Germany</p> <table><tr><td>performance guarantee:</td><td>20 years</td></tr><tr><td>Nominal power:</td><td>330 Wp</td></tr><tr><td>System voltage:</td><td>24 Volt</td></tr><tr><td>nominal voltage:</td><td>33.06V</td></tr><tr><td>idle voltage:</td><td>41.13V</td></tr><tr><td>nominal current:</td><td>9.79A</td></tr><tr><td>short-circuit current:</td><td>10.16A</td></tr><tr><td>Efficiency:</td><td>19.5%</td></tr><tr><td>With bypass diode:</td><td>20A</td></tr><tr><td>Temperature range:</td><td>-40 C deg to + 85 C deg</td></tr><tr><td>Dimensions:</td><td>1684 x 1002 x 35 Dimensions may vary</td></tr></table> <p>With stable aluminum frame. (black for a surcharge)</p> <p>Minimum order quantity 5 pieces S-SOL24330F</p>	performance guarantee:	20 years	Nominal power:	330 Wp	System voltage:	24 Volt	nominal voltage:	33.06V	idle voltage:	41.13V	nominal current:	9.79A	short-circuit current:	10.16A	Efficiency:	19.5%	With bypass diode:	20A	Temperature range:	-40 C deg to + 85 C deg	Dimensions:	1684 x 1002 x 35 Dimensions may vary		
performance guarantee:	20 years																									
Nominal power:	330 Wp																									
System voltage:	24 Volt																									
nominal voltage:	33.06V																									
idle voltage:	41.13V																									
nominal current:	9.79A																									
short-circuit current:	10.16A																									
Efficiency:	19.5%																									
With bypass diode:	20A																									
Temperature range:	-40 C deg to + 85 C deg																									
Dimensions:	1684 x 1002 x 35 Dimensions may vary																									
 	<p>PV Solar Panel 330W Heckert Mono - at 10 pcs. or more</p> <p>Monocrystalline solar-module 33V of german production with high degree of efficiency. at ordering quantity 10 pcs. or more.</p>	<p>High quality monocrystalline solar-cells (tempered glass encapsulated, hailproof) This modern cell technology has a high degree of efficiency and allows charging also at cloudy weather. On the back connecting cables with waterproof MC4 connectors IP67 Made in Germany</p> <table><tr><td>performance guarantee:</td><td>25 years</td></tr><tr><td>product guarantee:</td><td>11 years</td></tr><tr><td>Nominal power:</td><td>330 Wp</td></tr><tr><td>System voltage:</td><td>24 Volt</td></tr><tr><td>nominal voltage:</td><td>33.06V</td></tr><tr><td>idle voltage:</td><td>40.73V</td></tr><tr><td>nominal current:</td><td>9.79A</td></tr><tr><td>short-circuit current:</td><td>10.16A</td></tr><tr><td>Efficiency:</td><td>19.7%</td></tr><tr><td>With bypass diode:</td><td>20A</td></tr><tr><td>Temperature range:</td><td>-40 C deg to + 85 C deg</td></tr><tr><td>Dimensions:</td><td>1670 x 1006 x 38 Dimensions may vary</td></tr></table> <p>With stable aluminum frame. (black for a surcharge)</p> <p>Certification mark: VDE Minimum order quantity 10 pieces S-SOL24330M</p>	performance guarantee:	25 years	product guarantee:	11 years	Nominal power:	330 Wp	System voltage:	24 Volt	nominal voltage:	33.06V	idle voltage:	40.73V	nominal current:	9.79A	short-circuit current:	10.16A	Efficiency:	19.7%	With bypass diode:	20A	Temperature range:	-40 C deg to + 85 C deg	Dimensions:	1670 x 1006 x 38 Dimensions may vary
performance guarantee:	25 years																									
product guarantee:	11 years																									
Nominal power:	330 Wp																									
System voltage:	24 Volt																									
nominal voltage:	33.06V																									
idle voltage:	40.73V																									
nominal current:	9.79A																									
short-circuit current:	10.16A																									
Efficiency:	19.7%																									
With bypass diode:	20A																									
Temperature range:	-40 C deg to + 85 C deg																									
Dimensions:	1670 x 1006 x 38 Dimensions may vary																									

Photovoltaic Off-Grid Power Systems with Battery



PV Solar Power System Kit 12V 140W



Independent power generation. Solar power island system with solar module and battery
S-SOL910-12

Solar-powered power supply system for generating 12V DC.
Areas of application: Vineyard, arbour, allotment garden, alpine hut, water pump, animal stable, mobile phone, camera ...
In order to provide electrical energy even at night or when the sky is overcast, the system is equipped with rechargeable batteries.

Technical data:

Solar module output in sunshine: 190 Wp
Maximum connectable loads: 400 W
Short-term peak load (starting current) 1000 W
Short-circuit protection and overload circuit.

In order to provide electrical energy at night or under cloudy skies, the system is equipped with rechargeable batteries.

Energy storage: 1.2 KWH
Operating time with fully charged battery 5 hours at 200 watts continuous consumption (or
(or 24 hours at 50 W continuous consumption / 12W continuous operation).
The higher the consumption, the shorter the operating time will be.

The system is delivered ready for connection and consists of the following components:

1 monocrystalline solar module, sealed and hail-resistant, life expectancy approx. 25 years.

The high-quality solar cell technology also guarantees charging on cloudy days.

Dimensions approx. 1160 x 670 x 35mm.

Mounting bracket for solar module for attachment to a flat roof or slightly sloping roof.

1 solar charge controller with overcharge protection and deep discharge protection.

1 solar battery AGM 12Volt 100Ah longlife.

Housing: aluminium very compact: L 200mm, W 80mm, H 64mm

6 metre cable to the solar modules.

Battery cable

Assembly instructions

Weight: 50 kg



Off-Grid Solar Home Power System 230V 3kW



Photovoltaic energy supply. Complete generating package with PV-modules, batteries and inverter 230 volt.
S-SOL94AB

Solar powered PV isle energy system for generating of 230 V AC voltage. For use in regions without electricity. To supply electrical energy even at night or under cloudy sky, this system has an energy store with batteries.

Inverter:

Combined power supply for photovoltaic, mains and battery operation. The battery charging can be done via the solar modules or via the power grid or an auxiliary diesel generator. MPPT Maximum power point tracking adjusts the solar module voltage to the battery voltage for up to 30% more power from the solar modules. Overload and deep discharge protection for the batteries. Output voltage: 230V
Single Phase 50 -60Hz, auto-sensing
Pure sine wave
Maximum consumer load capacity: 3000VA / 2400W
Short-term peak load (starting current for motors): 3500 W
Efficiency: 98%
Short circuit protection and overload cut-off.
Standby power consumption only 2W
Temperature range: 0 - 55°C
Housing: Steel sheet painted
Dimensions: 600mm x 600 x 600mm

Solar panels:

Solar module power at sunshine: 2800 watts peak
Monocrystalline solar modules,
Power: 265Wp
Efficiency: 16% - 17%
Sealed and resistant to thunderstorm or hail.
Life expectancy approx. 25 years.
The high-quality solar cell technology has a high degree of efficiency and allows charging also at cloudy sky.
The required area for mounting the solar modules is about 21 square meters (e.g., 3m * 7m).

Energy storage:

4 Solar batteries AGM longlife.
Capacity: 7.4 kWh
System voltage: 48V
Operating time with fully charged batteries 3 hours at 10A / 2300 watts of continuous consumption
(Or 12 hours at 625W).
The higher the consumption, the shorter will be the backup time.
Continuous operation 280W - 900W (average sampling day and night, depending on the weather, sun and region)
On request, the energy store is also available in smaller stages to reduce costs.

The system is delivered ready for connection and consists of the following components:

12 solar modules,
1 inverter for wall mounting
12 solar batteries
Mounting rails and brackets for installation of the solar panels on inclined roofs. Other installation accessories on request.
Cables and terminals.
Assembly Instructions

The inverter is only for indoor use.
This system is also ideal for areas with frequently power shortages.
The modules truss system is for flat roof or for yard installation.
The energy yield roughly equivalent to the annual electricity consumption of a 1-family house with 3 persons in Egypt.
Weight: 972 kg



Off-Grid Solar Power Box 230V 3kW

Independent power generation. Rollable solar power inverter system with PV panels and lithium iron phosphate battery storage.
S-SOL94AL



Off-Grid Solar Power Box 230V 3kW

Photovoltaic energy supply. Transportable inverter box without PV-modules, with LiFePo4 batteries
S-SOL94L



Off-Grid Solar Power Generation System 230V 3kW Portugal

Photovoltaic energy supply for tropical and desert countries. Complete package with PV-modules, batteries and inverter 230 volt.
S-SOLAR093



Photovoltaic Solar Refrigerator



Fridge and Freezer with solar PV modules.
S-SOLAR52

Solar electric powered refrigerator.
During the day, the system generates electricity from the solar panels and supplies the fridge.
The electrical energy is stored in batteries for 2 days, depending on the ambient heat and how often the refrigerator is opened and closed.
Refrigerator and battery box should be placed in shadow.
With 2 mono-crystalline solar modules, each 205Wp sealed, and hail resistant, life expectancy around 25 years.
The high quality solar cell technology also ensures cooling on cloudy days.
Engel fridge, german branded freestanding refrigerator.
The refrigerator is thanks to its high efficiency and unmatched performance perfectly for use in hot tropical countries.
Engel coolers are for 40 years, the devices of choice for offshore sailors, professional 4x4 expeditions in the tropics, etc. The patented vibrating compressor trouble all ENGEL devices allowed and very quiet operation even at extreme inclination, and excessive vibration.
The coolers are renowned for their very high quality and their unique longevity.
For this reason, this is the only manufacturer with a 3 year warranty!
Fridge dimensions: W x H x D 520 x 780 x 548 mm (without door 505 mm)
Capacity: 80 liters
Material: film-based polyurethane foam body, door frame steel, door with magnetic closure
Color: Frame lacquered gray, black door
Weight: 29 kg
Internal Temperature range: +5 ° C to > -2 ° C
**-Freezer, electronic thermostat
Ambient temperature -20C deg to +55C deg
Power consumption: 32 Watts
Front Decoration: interchangeable
Door hinge: Left / Right
System voltage: 24 Volt
Current max. 8.33A
Mounting hooks for the solar modules to be mounted on sloped roof.
Cables and terminals, and fuse.
Weight: 140 kg

Solar lighting for garden shed, stable, weekend house



Solar Lighting for Container Housings

Independent solar powered LED light system for accommodation containers or mobile camps without electricity.

Powerful complete package with LED light fixture, solar panel, battery and solar controller. Ready to mount including installation manual and:
Monocrystalline solar panel 300Wp, thunderstorm-proof, lifespan > 25 years,
Module dimensions: 1800 x 1000 x 35mm.
2 mounting brackets,
2-4 rigid LED lighting bars with aluminium profile 50cm
light output 650 lm
High power solar gel battery 12 volt, longlife maintenance-free
Solar controller with deep discharge protection,
Wall switch.
Protection case IP65 for battery and electronic,
25 m cable.
Operating duration at cloudy weather 35 hours (at full charged battery).
Daily operation 8 / 12h depends on the ordered model and the weather conditions.
No guarantee on batteries.
Dimensions of the LED light bars: L 500 mm, B 20 mm, H 10 mm
S-SOLAR75

Solar Lighting for Parking Lot, Carport, Bus Shelters



Solar Lighting for Carport with motion sensor



Independent LED solar lighting for garage forecourt, front door, carport or yard.

With motion detector. Easy to install, simple to retrofit.
S-SOLAR76-1

Powerful PV solar lighting with swivelling LED light and motion detector. The system consists of only 2 components: The solar module and the luminaire unit.

The connection is simply plugged together with the enclosed cable. Only the luminaire and module need to be screwed in place as required using the fastening material provided. The lighting is ready.

Function:

The light switches on automatically in the dark.

It remains in economy mode with 30% light output.

When a person is detected, the brightness switches to 100%.

After about 30 seconds, the brightness drops back to economy mode.

In winter, when the weather is dark for several days, it is possible that the solar module does not supply enough energy and the luminaire does not shine continuously.

Luminaire module:

LED Power: 10W

Pleasant brightness 30 Lux / 1.8m

Light colour: 4000K bright white

IR detector Range: 6m

Detection angle: 180

Swivelling wall floodlight made of black aluminium.

Protection class: IP65

Luminaire dimensions: Width 242mm, D 70mm, H 130mm

Solar panel:

1 monocrystalline solar module, sealed and hail-resistant, Life expectancy approx. 20 years.

Module dimensions: approx. 190 x 290 x 25mm

Mounting bracket for solar module,

2 m cable with plug connector

Technical data:

Self-sufficient light duration approx. 8 hours depending on weather conditions with fully charged battery.

At 60 switch-ons per night, this corresponds to about one to two nights if no solar charging takes place.

With LiO longlife batteries 8AH

Deep discharge protection.

2-year warranty, batteries excluded.

Weight: 2 kg



PV Solar Double Car Parking Lighting Set

Independent solar photovoltaic light system for big carport, garden cottage, camping mobile, mountain cottage ...
S-SOLAR77



Solar Lighting Set for large Car Ports with motion sensor

Independent, bright LED solar lighting for covered vehicle parking spaces, also for double carports.
With motion detector. Easy to install, simple to retrofit.
S-SOLAR78

Very bright PV solar lighting with swiveling LED light and motion detector. The system consists of two components: the solar module and the luminaire unit.

The connection is simply plugged together with the attached cable. Just light and module must be screwed tight - Ready to go.

Luminary fixture:

LED power 10W

Luminous output: 750 lm

Pleasant brightness 30 lux / 1,8m

Light color: 4000K natural white

Automatic switch-on to 10% economy mode in the dark.

Upon detection of a person, the lamp switches to full light intensity.

After about 30 seconds, the lighting switches back to economy mode.

IR detector Range 5 - 8 m at 180 ° detection angle.

Dimensions: W 300 mm, H 150 mm, D 120 mm

Weatherproof protective housing IP54

Solar module:

1 monocrystalline solar module, sealed and hailproof, life expectancy approx. 25 years.

The high-quality solar cell technology also ensures charging in cloudy skies.

Module dimensions: about 350 x 360 x 25mm

Mounting bracket for solar module,

2 m cable with connector

Technical specifications:

Self-sufficient light duration approx. 8 hours depending on weather conditions with fully charged rechargeable battery.

With 60 starts per night, this will be 2 nights if no solar charge is applied.

With LiO longlife batteries, 8AH

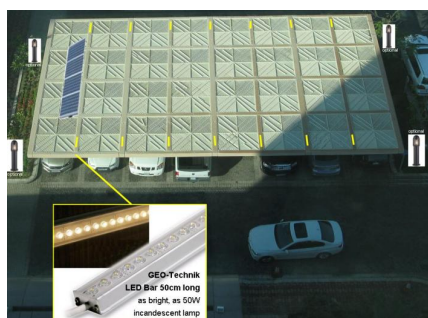
Deep discharge protected.

3 years warranty, batteries excluded.

Weight: 2 kg



Solar Lighting for Parking Lot 16 Cars



Independent photovoltaic-solar lighting for large, covered car parks without electricity connection.
S-SOLAR79-4

Complete package for pv lighting without electrical grid.

Designed for sun rich countries close to the equator.

For installation in Europe or other countries with average or lower sun intensity, we suggest to use different solar modules.

Pls. ask us for free calculation for your personal optimized lighting system.

On request, we can also supply with IR movement detector for lighting on demand.

High quality monocrystalline solar modules (tempered glass encapsulated, hailproof) aprx. 25 years life expectancy.

This modern cell technology has a high degree of efficiency and allows charging also at cloudy weather.

Very long maintenance-free system lifespan.

Technical specifications:

Autarkic operating time: > 30 h at fully charged battery.

The lighting starts automatically at sunset and stops in the morning.

Daily lighting hours: Max. 12 h

Light colour: CCT 4000K neutral white (on request also 3000K warm white).

Autarkic Solar Lighting System, consisting of:

4 Solar Modules with mounting material,

Control system with automatic nighttime switch,

fixed on one of the roof porting columns of the canopy,

battery box, distributor boxes and 50m electrical cable.

This set is designed for parking with max. 16 car places. For more places you need several systems,

Pls. order extra:

Max. 16 pcs. robust aluminium LED Light bars for installation below the carport roof, between each parking space.

Weight: kg

Solar lighting for bus stop



Solar Lighting Set for Bus Stop with timer



Independent LED solar lighting for bus stops, bus shelters, bus shelters, animal stalls.
S-SOLAR80

Bright PV solar lighting with LED light strip, solar panel, rechargeable battery and solar control.

Luminaire control:

Automatic switch-on at sunset and switch-off at sunrise.

Light duration digitally programmable via timer

Power reserve: 3 years (lithium battery)

Current: Max. 10A

17 time settings can be made

Warranty: 4 years

Example:

Switch-on in the evening at dusk (pre-set), switch-off via timer Mon-Fri at 22:00 hrs.

In the morning, switch-on at 05:00, switch-off at sunrise (pre-set).

Switched off on Saturdays and Sundays.

All functions are pre-programmed by us free of charge according to project and customer specifications, so that the set is ready for operation immediately after installation.

Waterproof protective housing IP67 for battery and electronics.

Luminaire Specification:

1 impact resistant LED light strip

Dimensions: L 600 mm, W 60 mm, H 60 mm

LED type: SMD chipset

LED power: 5W

Light colour 4000K neutral white (on special order also 3000K warm white).

No UV radiation for reduced insect attraction.

LED efficiency: > 120 lm/w

Luminaire efficiency: > 110 lm/w

Luminous flux lumen: 625 lm

Central illuminance: > 25 Lux (1.8m height)

LED life approx. 80,000 hours

Protection class: IP65 (water and storm protected).

Impact resistance: IK10

Warranty: 4 years

Solar panel specifications:

Monocrystalline silicon with very high efficiency

Hardened protective glass, hail-resistant

This high-quality module technology guarantees charging even under cloudy skies.

Efficiency: > 19%

Output: 50Wp / 100Wp

Module dimensions: approx. 460 x 670 x 35mm for 8h Variante / 820x 765x 35mm for 12h variant

Life expectancy : approx. 25 years

Battery storage:

Battery : Lithium iron phosphate LiFePo4 12V

maintenance-free, longlife, for solar cycle operation

Capacity: 240 Wh

Ambient temperature: -20° to +60°C

Service life approx. 7 - 11 years / 20°C

Self-sufficient operating time in overcast weather (with fully charged battery):

8 hrs. variant: 60 hours

12 hrs. variant: 90 hours

Battery box:

The battery is housed in an elongated, sturdy aluminium case.

For wall mounting horizontally or vertically.

Protection class: IP65

Dimensions: 620x 80x 40mm / 12h variant 550x 80x 80mm

Scope of delivery:

Solar module with 5m connection cable and adjustable bracket for mounting on a foundation, roof or wall.

LED light with 3m connection cable and mounting clips

Box with luminaire control and weekly timer
Battery with housing

Ready for connection with construction plan.
Weight: 24 kg



Solar Lighting Set for Bus Stops with motion sensor



Independent LED solar lighting for bus stops, bus shelters, bus shelters with canopy.
With motion detector. Easy to install, simple to retrofit.
S-SOLAR80-1

Powerful PV solar lighting with swivelling LED light and motion detector. The system consists of two components: The solar module and the luminaire unit.

The connection is simply plugged together with the enclosed cable. Only the luminaire and module need to be screwed in place with the enclosed fastening material. The lighting is ready.

Function:

The light switches on automatically in the dark. It remains in economy mode with 10% light output. When a person is detected, the light switches to full light intensity. After about 60 seconds, the brightness drops back to economy mode. A remote control is available at extra cost to change the basic brightness values.

Luminaire module:

LED Power: 10W
Luminous flux: 1020 Lm
Pleasant brightness: 30 Lux / 1.8m distance
Light colour: 4000K natural white
IR detector range: 6m
Detection angle: 180
Housing: Swivel-mounted wall floodlight in grey aluminium.
Dimensions: W 240 mm, H 130 mm, D 70 mm
Protection class: IP65

Solar panel:

Monocrystalline solar module, sealed and hail-resistant, life expectancy approx. 25 years.
The high-quality solar cell technology ensures charging even on cloudy days. In winter, when the weather is dark for several days, the solar module may not supply enough energy and the light may not shine continuously.
Module dimensions: approx. 350 x 360 x 25mm
Mounting bracket for solar module,
Connecting cable: 2 m long, with plug connector

Technical data:

Self-sufficient light duration: approx. 8 hrs. depending on weather conditions with fully charged battery.
At 60 switch-ons per night, this corresponds to about 2 nights if no solar charging takes place.
With LiO longlife batteries: 185 Wh
Deep discharge protection.
Warranty: 2 years, batteries excluded.
Weight: 2 kg

Accessories for outdoor fixtures



Remote unit for Solar Lighting Set S-SOLAR80-1

Remote controller for the solar powered LED light system for bus shelter, small train station ...
S-SOLAR80-1N

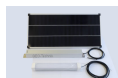
Remote control to be able to change the basic brightness values.
Weight: 0 kg

Solar lighting for bus stop



Solar Lighting for Bus Shelter

Independent LED solar lighting for bus stops, bus shelters, bus stops. With motion detector and additional permanent lighting for the timetable or an advertising board.
S-SOLAR80-3



Solar Lighting for large Bus Shelter with clock timer

Independent LED solar lighting for large bus stops, large bus shelters, bus stop, animal pen. With timer and basic lighting.
S-SOLAR80-4



Solar Lighting Set for Bus Stops with motion sensor

Independent solar powered LED light system for bus shelter, small train station ...
Plug & Pay solution for simple and very quick installation.
S-SOLAR80-6



Powerful PV solar lighting with LED tube-shaped light and motion detector. The system consists of two components: The solar module and the luminaire unit. The connection is simply plugged together with the enclosed cable. Only the luminaire and the PV module need to be screwed in place with the fastening material provided. The lighting is ready.

Luminaire module:

LED Power: 18W
Luminous flux: 2200 Lm
High brightness: 30 Lux / 2.8m distance
Light colour: 4000K natural white
Motion detector: Radar, range 5 - 8 m
Detection angle: 180 deg
Automatic switch-on in darkness
Housing: Sturdy ABS surface-mounted luminaire
Dimensions: L 600 mm, H 92 mm, D 84 mm
Protection class: IP67
Impact resistance: IK10

Incl. remote control:

For selecting the different operating modes:
A) Luminaire only reacts to motion detectors and otherwise remains dark.
B) The light is always on 50% economy mode at night; only when a person is detected does the luminaire switch to full light intensity. After about 60 seconds, the light switches back to economy mode. Other time functions or continuous light can be selected according to the operating instructions.

Solar module:

Monocrystalline solar module, sealed and hail-resistant, life expectancy approx. 25 years.
The high-quality solar cell technology ensures charging even on cloudy days. In winter, when the weather is dark for several days, the solar module may not supply enough energy and the light may not shine continuously.
Module dimensions: Approx. 820 x 675 x 35mm
Mounting bracket for solar module,
Connecting cable: 5 m long, with plug connector

Technical data:

Self-sufficient light duration: approx. 12 hrs. depending on weather conditions with fully charged battery.
At 60 switch-ons per night, this corresponds to 2 nights if no solar charging takes place.
With LiO longlife batteries: 216 Wh
Deep discharge protection.
Warranty: 3 years, batteries excluded.
Weight: 2 kg



Solar Lighting Set for Bus Stops with motion sensor



S-SOL829-5
GEO-Technik

Independent solar powered LED light system for bus shelter, small train station ...
Plug & Pay solution for simple and very quick installation.
S-SOLAR80-6N

Powerful PV solar lighting with LED tube-shaped light and motion detector. The system consists of two components: The solar module and the luminaire unit.

The connection is simply plugged together with the enclosed cable.

Only the luminaire and the PV module need to be screwed in place with the fastening material provided.

The lighting is ready.

Luminaire module:

LED Power:	18W
Luminous flux:	2200 Lm
High brightness:	30 Lux / 2.8m distance
Light colour:	4000K natural white (on request 3000K warm white)
Motion detector:	Radar, range 5 - 8 m
Detection angle:	180 deg
Automatic switch-on in darkness	
Housing:	Sturdy ABS surface-mounted luminaire
Dimensions:	L 600 mm, H 92 mm, D 84 mm
Protection class:	IP67
Impact resistance:	IK10

Incl. remote control:

For adjusting the automatic lighting in any time blocks at night and in the morning.

Dimmability of basic lighting 0% - 100%

Dimmability of the lighting when the motion detector is activated 0% - 100%.

Solar module:

Monocrystalline solar module, sealed and hail-resistant, life expectancy approx. 25 years.

The high-quality solar cell technology ensures charging even on cloudy days. In winter, when the weather is dark for several days, the solar module may not supply enough energy and the light may not shine continuously.

Module dimensions: Approx. 820 x 675 x 35mm

Mounting bracket for solar module,

Connecting cable: 5 m long, with plug connector

Technical data:

Self-sufficient light duration: approx. 12 hrs. depending on weather conditions with fully charged battery.

At 60 switch-ons per night, this corresponds to 2 nights if no solar charging takes place.

With LiFePo4 longlife batteries: 216 Wh

Deep discharge protection.

Warranty: 3 years, batteries excluded.

Weight: 2 kg



Solar bus stop lighting with pole and push button



Switchable lighting for bus stop without power connection. With stable 4m mast and swivelling LED spotlight. 1 - 30 minutes switchable for lighting as needed.

S-SOLAR80-7

Robust photovoltaic area lighting with LED lamp - no power supply required. High brightness - comparable to 100 watt halogen light.

With a switch - the lighting is switched on as needed.

The shutdown takes place automatically after 1 or 2 hours with an adjustable timer.

So turning off will not be forgotten and the battery will not deep discharge.

The LED floodlight is rotatable and pivotable.

All functions are pre-programmed charge on the project and customer requirements from us, so that the lamp is ready for use immediately after construction.

Solar module (without extension): monocrystalline silicon 40W with very high efficiency (tempered safety glass, hail-resistant), about 25 years of life expectancy.

This high-quality module technology allows charging also on cloudy days.

Pole and brackets are hot dip galvanized (on surcharge with a UV-resistant painting).

The screws are made from stainless VA steel.

Robust LED luminaire head of diecast aluminum with high protection (water and storm protected).

The solar lamp is maintenance-free - (only the solar module should be cleaned occasionally with water).

Technical specifications:

LED Lamp: Power LED 10W Chipset

LED lifetime: about 40,000 hours

Energy Class: B

Luminous flux: > 1100 Lm

Light color: 4000K cool white

Illuminated area: Ca. 8 x 5m

Mast height: 4 m

Autonomous operating time in overcast weather (with fully charged battery):

a) basic version: 6 hours

b) with extension kit autumn: 9 hours

c) with extension kit winter: 12 hours

For adequate reliability in autumn or winter, we strongly recommend our expansion sets.

Ambient temperature: -20 °C ~ + 50 °C (extension possible on request)

Solar battery: Lithium-Eisenphosphat LiFePo4 12V, maintenance-free, long life. Life is about 10 years / 20°C

Temperature-optimized battery-charge and trickle charge to protect the batteries.

Overvoltage and deep discharge protection for the battery.

Reverse polarity and short circuit protection.

Protection lamp head: IP66

Protection Light Control: IP67

Protection class: III Safety extra low voltage

Approvals: CE, RoHS, WEEE

Supplied flat pack with the following components:

LED lamp head with pole mounting,

High power solar battery,

Solar module with stable, screw-pole mounting,

Galvanized steel mast, height 4 meters + anch. section 600mm for concreting,

Microprocessor control lights (located conveniently accessible behind a lockable door in the mast).

Illustrated installation instructions in German or English.

All components are pre-wired and ready for fast assembly.

20 years availability guarantee for spare parts.

The ready-lamp is delivered disassembled, complete with solar panel, mast, battery and lamp.

Weight: 39 kg

Solar lighting for garden shed, stable, weekend house



Luxury Solar home Lighting Set House



The independent solar photovoltaic light system for garden cottage, camping mobile, mountain cottage ...
S-SOLAR81

Complete photovoltaic system package with 3 surface-mounted lights, light switch, solar module, battery and charge controller.

This set is not a "one box system", but consists of selected individual components.

The advantage is that you can mount the light switches on the wall, next to the entrance and on the table, where they are needed and not on the battery box.

We supply sufficient cables and an easy-to-understand connection diagram for simple installation.

The operating time is up to 26 hours with a fully charged battery.

Average daily illumination is approx. 2 hours.

So there is enough reserve to connect further lights or small consumers to the accumulator, but this shortens the daily lighting time.

On request, we can supply other lights of your choice or we can put together larger systems for holiday home lighting or weekend house lighting.

Operating voltage: 12V

Energy storage: 540 Wh (0.5 kWh)

Scope of delivery:

1 monocrystalline solar module 50W, sealed and hail-resistant, life expectancy approx. 20 years.

The high-quality solar cell technology also guarantees charging on cloudy days.

Module dimensions: approx. 630 x 550 x 28mm.

Mounting bracket for solar module,

1 Decorative LED surface-mounted light for indoors 7 Watt (corresponds to 60W bulb),

1 Decorative LED pendant light above the table for indoors 7 Watt (corresponds to 60W bulb),

1 LED surface-mounted light for outdoors 7 watt (corresponds to 60W bulb), (Alternatively with other lights of your choice at extra charge).

1 high-performance solar gel battery 12 volts maintenance-free (no car battery because of the short service life with frequent discharge).

1 solar charge controller,

2 wall switches,

20 m cable.

Weight: 29 kg



PV Solar Lighting Set Home and Hut



Independent solar photovoltaic system for homes in remote regions, garden cottage, camping mobile, mountain cottage ...
S-SOLAR82

Complete package photovoltaic system with 2 surface-mounted lights, light switch, solar module, battery and charge controller.

This set is not a "one box system" but consists of selected individual components.

The advantage is that you can attach the light switches to the wall, next to the entrance and the table, where they are needed and not on the battery box.

We supply sufficient cables and an easy-to-understand connection diagram for easy installation.

The operating time is up to 26 hours when the battery is fully charged.

Average daily lighting about 2 hours.

So there is sufficient reserve to connect more lights or small consumers to the battery,

however, this shortens the daily illumination time.

Upon request, we deliver with other lights of your choice or we provide you with larger systems for holiday home lighting or weekend house lighting.

Delivery:

1 monocrystalline solar module 50W, sealed and hailproof, life expectancy approx. 20 years.

The high-quality solar cell technology also ensures charging in cloudy skies. Module dimensions: approx. 630 x 550 x 28mm.

Mounting bracket for solar module,

2x LED surface-mounted luminaire for indoor and outdoor 6 Watt (corresponds to 60W bulb),

1 high-performance gel solar battery 12 Volt maintenance-free (no car battery because of the short life span with frequent discharge).

1 solar charge controller.

2 wall switches,

15 m cable.

Weight: 18 kg



Solar Lighting Set for Garden Cottage



Small solar light system for garden cottage, camping mobile, mountain cottage ...
S-SOLAR83

Complete package photovoltaic system with surface-mounted luminaire, light switch, solar module, battery and charge controller.

This set is not a "one box system", but consists of selected individual components.

The advantage is that you can attach the light switches to the wall, next to the entrance and the table, where they are needed and not on the battery box.

We supply sufficient cables and an easy-to-understand connection diagram for easy installation.

The operating time is up to 26 hours when the battery is fully charged.

Average daily lighting about 3 hours.

So there is sufficient reserve to connect more luminaires or small consumers to the accumulator,

however, this shortens the daily illumination time.

Upon request, we deliver with other lights of your choice or we provide you with larger systems for holiday home lighting or weekend house lighting.

Delivery:

1 monocrystalline solar module 20W, sealed and hailproof, life expectancy approx. 20 years.

The high-quality solar cell technology also ensures charging in cloudy skies. Module dimensions: approx. 630 x 550 x 28mm.

Mounting bracket for solar module,

1 Robust LED surface mounted luminaire for indoor or outdoor 5W (50W).

1 high-performance gel solar battery 12 Volt maintenance-free (no car battery because of the short life span with frequent discharge).

1 solar charge controller.

1 wall switch,

8 m cable

Weight: 16 kg



PV Solar Lighting Set Stable



Independent LED solar photovoltaic light system for storing cottage, mountain cottage, stable ...
S-SOLAR84

Complete package photovoltaic system with 2 bright surface-mounted lights, light switch, solar module, battery and charge controller.
This set is not a "one box system", but consists of selected individual components.

The advantage is that you can attach the light switch to the wall, next to the entrance, where it is needed and not on the battery box.

We supply sufficient cables and an easy-to-understand connection diagram for easy installation.

The operating time is up to 13 hours when the battery is fully charged.

Average daily lighting about 2 hours.

There is sufficient reserve to connect more luminaires or small consumers to the accumulator,

however, this shortens the daily illumination time.

Upon request, we can supply more luminaires of your choice or we can assemble larger systems for you.

Delivery:

1 monocrystalline solar module 50W, sealed and hailproof, life expectancy approx. 20 years.

The high-quality solar cell technology also ensures charging in cloudy skies.

Module dimensions: approx. 630 x 550 x 28mm.

Mounting bracket for solar module,

2 robust ship lights with LED for inside or outside.

The brightness corresponds to 2 x 60 watt incandescent lamp.

1 high-performance solar gel battery 12 Volt maintenance-free (no car battery because of the short life span with frequent discharge).

1 solar charge controller.

1 wall switch,

25 m cable.

Weight: 22 kg



Solar Home Lighting System 50W



Complete solar electricity power supply box with lamps for cottage or small house in Africa, Asia or South America.

S-SOLAR86-4

Complete package with LED lights, solar panel, battery and cables.
Easy to install - just plug in and go.

Battery

Capacity: 576 Wh

Available with two different battery types:

AGM battery 12V / 100Ah maintenance-free (service life: approx. 5 years)
or LiFePO4 battery 12V 50Ah (service life: approx. 10 years)

Solar panel 50Wp

High-quality monocrystalline solar cells (tempered glass encapsulated, protected against salt spray and moisture)

This modern cell technology has a high efficiency and allows charging even in cloudy weather.

Life expectancy approx. 25 years

Battery box:

Sturdy steel housing

with solar charge controller 12V / 10A and battery included.

PV input socket

3 sockets: Lamp output

USB port 5V for charging a mobile phone.

Including adapter cable for all common mobile phone models.

Fuse for full protection

Included in delivery:

3 pcs. LED lamps 12V / 6W

3 set lamp holder with chain switch and 5m cable

10m cable with plug for solar panel

Surcharge: FM radio

Weight: 32 kg



Solar Power and Lighting for small Home 100W



Solar power supply system with LED lamps for cottage or house in Africa, Asia or South America.

S-SOLAR86-5

Complete package with LED lamps, solar panel, battery and solar controller. Easy to install - including setup manual.

Solar panel:

High quality monocrystalline solar-cells (tempered glass encapsulated, protected against salty mist and humidity)

This modern cell technology has a high degree of efficiency and allows charging also at cloudy weather.

Life expectancy aprx. 25 years

12 Volt system voltage.

1 pc. 100Wp solar panel, crystalline

Battery storage:

Battery: Lithium iron phosphate LiFePo4 12V
maintenance-free, longlife, for solar cycle operation.

Voltage: 12V

Capacity: 30Ah

Service life approx. 15 years / 20°C

Function also at low or high temperatures.

Autonomous operating time: 30 h (with fully charged battery)

Steel case box:

Stable control box with solar charge controller 12V/10A and included battery.

with PV input socket

4 lamp output connectors

USB outlet 5V for cellphone charging

including adaptor cable for all common mobile phone models.

Fuse for full protection

with voltmeter for battery voltage display

4 pcs. 12V/ 6W LED bulbs

2 pcs. E27 light fitting & chain switch for DC light with 5m cable

2 pcs. E27 light fitting & chain switch for DC light with 10m cable

10m cable with plug for solar panel

Extra on surcharge: FM radio

Weight: kg



Solar Power + Lighting for Home 800W



Complete solar electricity and lighting system for cottage and home in Africa, Asia or South America.

S-SOLAR86-8

Complete package with LED lamps, solar modules, battery and solar controller.

System voltage: 24V

Capacity: 3600 Wh

Easy to install. Monocrystalline solar modules sealed with tempered glass cover, protected against high humidity and salty air.

Efficiency > 16

MPPT charging for up to 30% better energy utilisation of the solar modules.

Protection of the batteries against deep discharge.

Maintenance-free and sealed AGM batteries for cycle operation.

Battery life 10 years / 21°C

Scope of delivery:

4 pcs. PV monocrystalline solar module 200Wp

2 pcs. AGM longlife battery 12V/150Ah

Stable control box with solar charge controller 24V / 35A

5 pcs. LED lamps 12V / 6W

5 pcs. lamp holder E27 with chain switch and 10m cable

1 pc. 10m cable with plug for solar panel

Control box in steel housing:

with built-in regulator 35A with PV input socket

5 sockets 12V for the supplied lamp cables

2 sockets 24V for external devices (TV, fridge, fan)

5V USB socket for charging a mobile phone

Cigarette lighter socket for additional inverter

Fuse

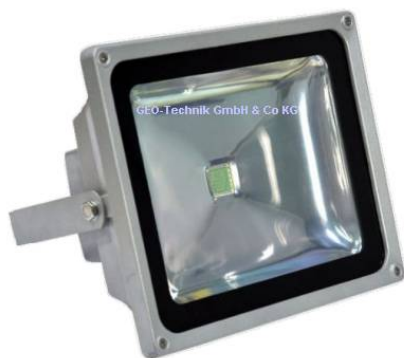
Voltmeter for battery charge indication

Weight: 174 kg

Solar Working Lights and Building Site Lighting



Solar Lighting for Market Stall with 2 LED Floodlights



Independent photovoltaic solar lighting set for market stall with LED spotlights. No power connection required.

S-SOLAR89-2

Complete photovoltaic system package with 2 bright LED spotlights, light switch, solar module, battery and charge controller.

During the day when the sun is shining or when the sky is overcast, the battery charges itself via the solar module.

In dark weather or in the evening, the lighting can be switched on.

The light intensity corresponds to about 2 80 Watt halogen spotlights.

We supply sufficient cables and an easy-to-understand connection diagram for simple installation.

The operating time is up to 14 hours with a fully charged battery.

With the additional battery, available as an accessory, you can extend the self-sufficient lighting time to 28 hours.

In rain and bad weather, recharging by the solar module is limited. In this case, the battery should be recharged overnight using a small charger.

On request, we can deliver with other luminaires of your choice or we can put together larger systems for you.

The LED floodlights are very durable and robust and can withstand rough handling during assembly and dismantling.

Dimensions of the LED floodlights only approx. 11cm x 8cm

Scope of delivery:

1 monocrystalline solar module 200W, sealed and hailproof, life expectancy approx. 20 years.

The high-quality solar cell technology also guarantees charging on cloudy days.

Module dimensions: approx. 1500 x 900 x 35mm.

Mounting bracket for solar module,

2 bright LED floodlights,

(alternatively with other lights of your choice at extra charge).

1 high-performance solar gel battery 12 volt maintenance-free (no car battery because of the short service life with frequent discharge).

1 solar charge controller.

Wall switch,

13 m cable

Weight: 39 kg

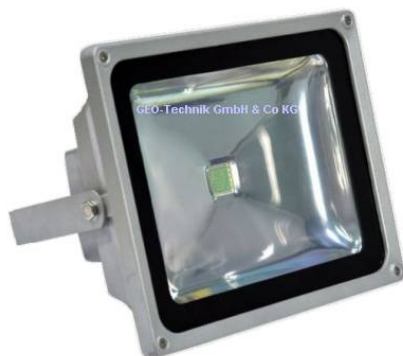
Solar Lighting for Sales Stand with 4 LED floodlights

Independent solar lighting set for sales stand with LED spotlights. No power connection required.
S-SOLAR89-4



Solar Lighting for Market Stall with 2 LED Floodlights

Two mobile LED spotlights with battery in a wheeled transport case. With solar module - no power connection required. For market stall and sales trolley.
S-SOLAR89M



Complete package with 2 bright LED spotlights, solar panel, battery and cable.
During the day when the sun is shining or the sky is overcast, the battery charges itself via the solar module.
In dark weather or in the evening, the lighting can be switched on. The light intensity corresponds to about 2 80 Watt halogen spotlights.
To set up, remove the two spotlights from the box, clamp them to the market umbrella or canopy and plug the cables into the box.
The solar module is set up, turned towards the sun and the cable is also plugged into the box. - Done
The operating time is up to 14 hours with a fully charged battery.
With the additional battery, available as an accessory, you can extend the self-sufficient lighting time to 28 hours.
In rain and bad weather, recharging by the solar module is limited. In this case, the battery should be recharged overnight using a small charger.
On request, we can deliver with other luminaires of your choice or we can put together larger systems for you.
The LED floodlights are very durable and robust and can withstand rough handling during assembly and dismantling.
Dimensions of the LED floodlights only approx. 11cm x 8cm

Scope of delivery:
Transport box with battery and charge controller.
1 monocrystalline solar module 200W hailproof with stand. Life expectancy approx. 20 years.
The high-quality solar cell technology also guarantees charging on cloudy days.
Module dimensions: approx. 1500 x 900 x 35mm.
2 bright LED floodlights,
1 high-performance solar gel battery 12 volts maintenance-free (no car battery because of the short service life with frequent discharge).
1 solar charge controller.
13 m cable

Weight: 39 kg

Photovoltaic Off-Grid Power Systems with Battery



Solar Photovoltaic Power System Kit 230V 500W



PV solar power generation Island system with solar module and inverter 500 W for operating TV, drill, small pump, lighting, etc.
S-SOLAR90

Solar-powered power supply system for generating 12V DC and 230V AC voltage.

Areas of application: Vineyard, gazebo, allotment garden, alpine hut, small pond pump, animal stable ...

In order to provide electrical energy even at night or under cloudy skies, the system is equipped with rechargeable batteries.

Energy storage:

Solar battery AGM longlife.

Capacity: 660 WH

Voltage: 12V

Operating time with fully charged battery 5 hours at 100 W continuous load (or 10 hours at 50 W continuous consumption / 10W continuous operation).

The higher the consumption, the shorter the operating time will be.

We recommend switching on the inverter only when necessary to avoid discharging the battery too quickly.

Inverter:

Output voltage: 230V 50 Hz

Single-phase

Modified sine wave

Continuous load: 500 W

Short-term peak load: (starting current for motors): 1000 W

Efficiency: 98

Short-circuit protection and overload cut-off.

Standby power consumption: only 2W

Temperature range: 0 - 55°C

Housing: aluminium

Dimensions: Very compact: L 200mm, W 80mm, H 64mm.

The inverter must be placed indoors or protected from rain.

Charge controller:

With overcharge protection and deep discharge protection.

Charging current: 10A

Solar panel:

Monocrystalline

Power: 150Wp

Efficiency: 18%.

Sealed and hailproof,

Life expectancy: approx. 25 years.

The high-quality solar cell technology also ensures charging on cloudy days.

Dimensions: approx. 832 x 538 x 35mm

The system is delivered ready for connection and consists of the following components:

1 solar module,

1 inverter

1 solar battery

Mounting bracket for solar module for mounting on a flat roof or slightly sloping roof.

5 metre cable to the solar modules.

Battery cable

Mounting instructions

Batteries and inverters should not be installed in living areas. overnment !

Weight: 39 kg



Extended PV Solar Power System Kit 230V 500W



PV solar power generation Island system with solar module and inverter 500 W for operating refrigerator, TV, etc.
S-SOLAR90B

Solar-powered power supply system for generating 12V DC and 230V AC voltage.

Areas of application: Vineyard, harbour, allotment garden, alpine hut, water pump, animal stable ...

In order to provide electrical energy even at night or when the sky is overcast, the system is equipped with rechargeable batteries.

Energy storage:

Solar battery AGM longlife.

Capacity: 1.2 KWH

Voltage: 12V

Operating time with fully charged battery 5 hours at 200 W continuous load (or 10 hours at 100 W continuous consumption / 18W continuous consumption).

The higher the consumption, the shorter the operating time will be.

We recommend switching on the inverter only when necessary to avoid discharging the battery too quickly.

Inverter:

Output voltage: 230V 50 Hz

Single-phase

Modified sine wave

Continuous load: 500 W

Short-term peak load (starting current for motors): 1200 W

Efficiency: 98

Short-circuit protection and overload cut-off.

Standby power consumption only 2W

Temperature range: 0 - 55°C

Housing: aluminium

Dimensions: Very compact: L 200mm, W 80mm, H 64mm.

The inverter must be placed indoors or protected from rain.

Charge controller:

With overcharge protection and deep discharge protection.

Charging current: 14A

Solar panel:

Monocrystalline,

Output: 180Wp

Efficiency: 197%.

Sealed and hailproof,

Life expectancy approx. 25 years.

The high-quality solar cell technology also ensures charging on cloudy days.

Dimensions approx. 1460 x 664 x 35mm

The system is delivered ready for connection and consists of the following components:

1 solar module

1 charge controller

1 inverter

1 solar battery

Mounting bracket for solar module for mounting on a flat roof or slightly sloping roof.

6 metre cable to the solar modules.

Battery cable

Mounting instructions

Batteries and inverters should not be installed in living areas.

Weight: 46 kg



Solar Photovoltaic Off-Grid System 230V 1000W

PV solar power generation Island system with solar module and inverter 1000 W for operating lighting and electrical appliances.
S-SOLAR91R




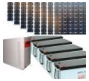

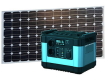

Solar Photovoltaic Power Kit 230V 1000W Sine

PV solar power generation Island system with solar module and inverter 1000 Watt.

Pure sine wave voltage 50Hz for operating sensitive electrical and electronic devices.

With automatic switchover to the mains, if available.

S-SOLAR91S

	Solar Photovoltaic Power System 230V 2kW	Solar PV off-grid kit to generate 230 volt 2000 watt for supply of sensitive electrical or electronic devices. S-SOLAR92
	Off-Grid Solar Power Generation System 230V 3kW	Independent power generation. Solar power island system with solar modules, batteries and hybrid inverter 230 Volt 3000 Watt. Pure sine wave voltage 50Hz for operating sensitive electrical and electronic equipment. With automatic switchover to the mains, if available. S-SOLAR93
	Off-Grid Solar Power System 230V 3kW Continuous	Independent photovoltaic power generation. Solar power island system with solar modules, batteries and hybrid inverter 230 Volt 3000Watt. Pure sine wave voltage 50Hz for operating sensitive electrical and electronic devices. For long-term operation. With automatic switchover to the mains, if available. S-SOLAR93D
	Solar Photovoltaic Off-Grid System Plug-n-Play 230V 1000W	PV solar power generation isle system with solar module and inverter 1000 W for operating lighting and electrical appliances. S-SOLAR94-1
	Off-Grid Solar Power System 230V 5kW	Photovoltaic energy supply. Complete kit with PV-modules, batteries and inverter 230 volt. S-SOLAR95



Solar Power Generator System 6 kW



Independent photovoltaic power supply. Isle system for outdoor use in abroad area. Complete package with PV-modules, batteries and inverter 230 volt. S-SOLAR95-1

Solar powered PV off-grid energy system for generating of 230V / 400V AC voltage 50 Hz 3 phases.

For use in areas without electricity. (We supply also photovoltaic plants for grid feeding at a lower price)

This system is equipped with rechargeable batteries, in order to provide electrical energy even at night or when the sky is overcasted.

Solar modules:

Solar module power at sunshine: 6000 watts peak

Monocrystalline solar modules,

Power: 300Wp,

Efficiency: 16% - 17%

Sealed and sandstorm proof,

Life expectancy approx. 25 years.

The high-quality solar cell technology also ensures charging in a cloudy sky.

The required area for mounting the solar modules is approx. 45 sqm.

Energy storage:

The energy storage is available in 3 stages:

12 / 20 / 40 pcs. solar batteries AGM longlife.

Basic version - 29 kWh (8 hours continuous operation at 3500W consumption or 29 hours at 1 kW)

Option 48 kWh (13 hours continuous operation with 3500 Watt consumption)

Option 96 kWh (26 hours continuous operation at 3500 W consumption)

Voltage: 48V

The higher the consumption, the faster the memory will be unloaded.

Continuous operation 0.6 kW - 1.5 kW (Average consumption day and night, depending on the weather, sun and region)

Inverter:

Combined power supply for photovoltaic, mains and battery operation.

The battery charging can be done via the power supply network or via the solar modules or diesel generator.

Charger with MPPT Maximum PowerPoint Tracking for up to 30% more power from the solar modules.

Output voltage: 230V

Three Phase

Frequency: 50 - 60Hz, auto-sensing, pure sine wave

Continuous load: 7200 W

Short-term peak load (starting current for motors): 9 KW

Efficiency: 98%

Short circuit protection and overload cut-off.

Solar charger with overcharge protection and deep discharge protection.

Standby power consumption only 6W

Temperature range: 0 - 55 ° C

Housing: aluminum

Dimensions: 3 individual units, each 460mm x 300 x 120mm

The system is delivered ready for connection and consists of the following components:

20 solar modules,

3 Inverter for wall mounting

12 solar batteries

Rails and mounting brackets for solar modules at a pitched roof, (other installation options on request)

Cables and terminals.

Assembly Instructions

This pv system can be funded by governmental funds !

Inverter and batteries should be installed in an enclosed space (basement or attic).

The energy yield corresponds approximately to the annual electricity consumption of a 1-family house with 5 persons in Germany.

When ordering, we need informations about your roof: angle of inclination and covering, e.g. Frankfurter pans, trapezoidal sheet metal, etc., so that we can supply the appropriate module brackets.

Weight: 2900 kg



Solar Off-Grid Energy System 10kW

Independent electric power supply. Isle system for 2 family house. Photovoltaic electricity with PV-modules, batteries and inverter 230 volt. S-SOLAR95-4

Mobile Solar Generators



Mobile Solar Power Trailer Generator 2 KVA



Photovoltaic power generation. Mobile solar power system as trailer with solar modules, batteries and inverter 230 Volt 200W.
Production article - Only for projects - Minimum order quantity 8 pieces.
S-SOLAR98-5

Solar-powered PV energy supply island system for generating 230V AC voltage 50Hz up to 1.3kW.
Robust power generator island system in a folding trailer.
The system is charged in the open field or in a place with plenty of sunlight. The modules are folded out for this purpose.
To draw power, the photovoltaic generator can be transported to the site of operation in the closed state.
Two fused Schuko plug connections with hinged lid.
Possible applications: Areas with unsecure power supply, events, residential buildings with frequent power interruptions, rescue operations, THW, Red Cross, military or police operations.

Technical data:

Charging time in direct sunlight 27 hours,
Charging time in diffuse sunlight 48 hours,
Voltage: 230V / 50Hz.
Continuous load max. 1600 Watt
Peak load max. 2000 VA / 10 sec.

Outputs:

2 x earthed socket with screw connection 10A
2 automatic circuit breakers 10A,
1 residual current circuit breaker 30mA.
Pure sine wave 50 Hz +/- 0.2%.
Distortion factor: 3%
Efficiency 85 - 90%
No-load current consumption 0.1A / 24V
Low battery alarm function.
Protection against overload, wrong polarity or short circuit.

The generator has a mains input, for recharging the batteries or for regular supply.
Power capacity 3.6 KWh or 7.2 KWh depending on equipment.
Operating time with fully charged batteries and closed solar panels:
24 hrs. at 130 W continuous consumption,
10 hrs. at 300 W continuous consumption,
3 hours at 1000 W continuous consumption.
The lower the consumption, the longer the operating time will be.

PV modules:

Module power: 1000 watts.
Sealed and hail-resistant,
Life expectancy approx. 25 years.
High-quality solar cell technology ensures charging even on cloudy days.

Dimensions:

Length 240cm, width 154cm, height 125cm.
When unfolded: length 405cm, width 154cm, height 125cm.
The solar modules are set in aluminium frames.
The fold-out construction is made of galvanised steel.
The generator trailer is made of sheet steel with a scratch-resistant colour coating.

The solar system is available with 2 inverters at an extra charge:
Main inverter 3kW 1-phase 230V continuous output
and second inverter 1kW for all important consumers (telecommunication, computer, lighting etc.).
When the battery charge drops, the main inverter switches off (dispensable consumers, such as heating, air conditioning, refrigerator).

Scope of delivery:

Mobile trailer with solar modules,
Solar charge controller,
Maintenance-free high-performance solar lead gel batteries, long-life type.
Weight: 244 kg



Mobile Solar Power Trailer Generator 3 KVA



Independent Photovoltaic off-grid power supply generator 230V with PV modules, batteries and inverter 230 volt 3 kW.
Produced on demand. MOQ 8 pcs.
S-SOLAR98-6

Solar-powered PV energy supply island system for generating 230V AC voltage 50Hz up to 2.4kW.
Robust power generator island system in a folding trailer.
The system is charged in the open field or in a place with plenty of sunlight. The modules are folded out for this purpose.
To draw power, the photovoltaic generator can be transported to the site of operation in the closed state.
Two fused Schuko plug connections with hinged lid.
Possible applications: Areas with unsecure power supply, events, residential buildings with frequent power interruptions, rescue operations, THW, Red Cross, military or police operations.

Technical data:

Charging time in direct sunlight 27 hours,
Charging time in diffuse sunlight 48 hours,
Voltage: 230V / 50Hz.
Maximum output 2400W
Continuous load max. 2400 Watt
Peak load max. 3000 watts / 10 sec.

Outlets:

2 x earthed socket with screw connection 10A
2 automatic circuit breakers 10A,
1 residual current circuit breaker 30mA.
Pure sine wave 50 Hz +- 0.2%.
Distortion factor: 3%
Efficiency 85 - 90%
No-load current consumption 0.1A / 48V
Low battery alarm function.
Protection against overload, wrong polarity or short circuit.
The generator has a mains input, for battery recharging or regular supply.
Power capacity: 7.2 KWh depending on equipment.
Operating time with fully charged batteries and closed solar panels:
24 hrs. at 250 W continuous consumption,
10 hrs. at 600 W continuous consumption,
3 hours at 2000 W continuous consumption.
The lower the consumption, the longer the operating time will be.

Dimensions: Length 240cm, width 154cm, height 125cm.

When unfolded: length 405cm, width 154cm, height 125cm.

The solar modules are set in aluminium frames.

The fold-out construction is made of galvanised steel.

The generator container is made of sheet steel with a scratch-resistant colour coating.

The solar system is available with 2 inverters at an extra charge:

Main inverter 3kW 1-phase 230V continuous output
and second inverter 1kW for all important consumers (telecommunication, computer, lighting etc.).

When the battery charge drops, the main inverter switches off (dispensable consumers, such as heating, air conditioning, refrigerator).

PV modules:

Module output: 1480 watts.

Sealed and hail-proof,

Life expectancy approx. 25 years.

The high-quality solar cell technology also ensures charging on cloudy days.

Scope of delivery:

Mobile trailer with solar modules,

Solar charge controller,

Maintenance-free high-performance solar lead gel batteries, long-life type.

Weight: 379 kg



Mobile Solar Power Trailer Generator 5 KVA



Independent Photovoltaic off-grid power supply generator 230V with PV modules, batteries and inverter 230 volt 5 kW.
Produced on demand. MOQ 8 pcs.
S-SOLAR98-7

Solar-powered PV energy supply island system for generating 230V AC voltage 50Hz up to 2.4kW.
Robust power generator island system in a folding trailer.
The system is charged in the open field or in a place with plenty of sunlight. The modules are folded out for this purpose.
To draw power, the photovoltaic generator can be transported to the site of operation in the closed state.
Two fused Schuko plug connections with hinged lid.
Possible applications: Areas with unsecure power supply, events, residential buildings with frequent power interruptions, rescue operations, THW, Red Cross, military or police operations.

Technical data:

Charging time in direct sunlight 27 hours,
Charging time in diffuse sunlight 48 hours,
Voltage: 230V / 50Hz.
Maximum output 2400W
Continuous load max. 2400 Watt
Peak load max. 3000 watts / 10 sec.

Outlets:

2 x earthed socket with screw connection 10A
2 automatic circuit breakers 10A,
1 residual current circuit breaker 30mA.
Pure sine wave 50 Hz +- 0.2%.
Distortion factor: 3%
Efficiency 85 - 90%
No-load current consumption 0.1A / 48V
Low battery alarm function.
Protection against overload, wrong polarity or short circuit.
The generator has a mains input, for battery recharging or regular supply.
Power capacity: 7.2 KWh depending on equipment.
Operating time with fully charged batteries and closed solar panels:
24 hrs. at 250 W continuous consumption,
10 hrs. at 600 W continuous consumption,
3 hours at 2000 W continuous consumption.
The lower the consumption, the longer the operating time will be.

Dimensions: Length 240cm, width 154cm, height 125cm.

When unfolded: length 405cm, width 154cm, height 125cm.

The solar modules are set in aluminium frames.

The fold-out construction is made of galvanised steel.

The generator container is made of sheet steel with a scratch-resistant colour coating.

The solar system is available with 2 inverters at an extra charge:

Main inverter 3kW 1-phase 230V continuous output
and second inverter 1kW for all important consumers (telecommunication, computer, lighting etc.).

When the battery charge drops, the main inverter switches off (dispensable consumers, such as heating, air conditioning, refrigerator).

PV modules:

Module output: 1480 watts.

Sealed and hail-proof,

Life expectancy approx. 25 years.

The high-quality solar cell technology also ensures charging on cloudy days.

Scope of delivery:

Mobile trailer with solar modules,

Solar charge controller,

Maintenance-free high-performance solar lead gel batteries, long-life type.

Weight: 379 kg

Solar Lighting for Parking Lot, Carport, Bus Shelters



Solar Lighting System for Parking Lot



Complete photovoltaic package for Parking Buildings with PV-modules, batteries and LED lights.
S-SOLARP6

Ready for connection with construction plan and:
Monocrystalline solar modules, sealed and hail-resistant, life expectancy approx. 25 years.
The high-quality solar cell technology also guarantees charging on cloudy days.
1 MPPT solar charge controller with overcharge protection and deep discharge protection.
Battery storage system AGM 24 Volt.
Rails and mounting clamps for solar modules on the façade, cables and clamps.
Operating time with fully charged batteries 24 hrs.
The required area for mounting the solar modules is approx. 8 sqm (1m * 8m).
Including control cabinet.

When ordering this package, we need exact details of your roof: angle of inclination and roofing, e.g. Frankfurter tiles, etc., so that we can supply the appropriate brackets to hold the modules securely in storms.
Weight: 772 kg

Photovoltaic On-Grid Systems



Solar Photovoltaic Balcony Power System Kit 230V 300W



PV solar power generation Island system with 3 solar modules 120W and inverter 295 W for direct grid injection.
S-SOLBK30

Solar-powered power supply system for generating 230V alternating voltage. The system must be registered with the energy supplier. There are no operating costs or feed-in costs.

Inverter:

With reactive power feed-in (according to VDE-AR-N 4105)

Output voltage: 230V 50 Hz

Single-phase

Modified sine wave

Continuous load: 290 W

Short-term peak load: 295 W

Efficiency: 98

Short circuit protection and overload cut-off.

Standby power consumption: only 2W

MPPT efficiency: 99

Noise generation: < 25dB very quiet

Cooling: convection

Ambient temperature -25°C to +55°C

Housing: aluminium

Protection class: IP65

Dimensions: Very compact: L 200mm, W 80mm, H 64mm

Solar modules:

Monocrystalline

Power: 3 x 120Wp

(not expandable)

Efficiency: 18%

Sealed and hailproof,

Life expectancy: approx. 25 years.

The high-quality solar cell technology also ensures charging on cloudy days.

Dimensions: approx. 1010 x 670 x 35mm

The system is delivered ready for connection and consists of the following components:

3 PV solar modules,

1 inverter

cables to the solar modules.

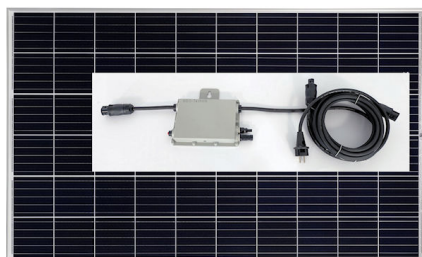
Assembly instructions

Mounting material for solar module for attachment to balcony railing, wall, roof or on the ground can be found in the accessories.

Weight: 46 kg



Solar Photovoltaic Balcony Power System Kit 230V 330W



PV solar power generation Island system with 1 solar module 330W and inverter 295 W for direct grid injection.
S-SOLBK30-2

Solar-powered power supply system for generating 230V alternating voltage. The system must be registered with the energy supplier. There are no operating costs or feed-in costs.

Inverter:

With reactive power feed-in (according to VDE-AR-N 4105)

Output voltage: 230V 50 Hz

Single-phase

Modified sine wave

Continuous load: 290 W

Short-term peak load: 295 W

Efficiency: 98

Short circuit protection and overload cut-off.

Standby power consumption: only 2W

MPPT efficiency: 99

Noise generation: < 25dB very quiet

Cooling: convection

Ambient temperature -25°C to +55°C

Housing: aluminium

Protection class: IP65

Dimensions: Very compact: L 200mm, W 80mm, H 64mm

Solar modules:

Monocrystalline

Power: 330Wp

(not expandable)

Efficiency: 19.5%

Sealed and hailproof,

Life expectancy: approx. 25 years.

The high-quality solar cell technology also ensures charging on cloudy days.

Dimensions: approx. 1684 x 1002 x 35 mm

The system is delivered ready for connection and consists of the following components:

1 PV solar module

1 inverter

cables to the solar module.

Assembly instructions

Mounting material for solar module for attachment to balcony railing, wall, roof or on the ground can be found in the accessories.

Weight: 46 kg



Solar Photovoltaic Balcony Power System Kit 230V 600W



PV solar power generation Island system with 6 solar modules 120W and inverter 600 W for direct grid injection.
S-SOLBK60

Solar-powered power supply system for generating 230V alternating voltage. The system must be registered with the energy supplier. There are no operating costs or feed-in costs.

Inverter:

With reactive power feed-in (according to VDE-AR-N 4105)

Output voltage: 230V 50 Hz

Single-phase

Modified sine wave

Continuous load: 290 W

Short-term peak load: 295 W

Efficiency: 98

Short circuit protection and overload cut-off.

Standby power consumption: only 2W

MPPT efficiency: 99

Noise generation: < 25dB very quiet

Cooling: convection

Ambient temperature -25°C to +55°C

Housing: aluminium

Protection class: IP65

Dimensions: Very compact: L 200mm, W 80mm, H 64mm

Solar modules:

Monocrystalline

Power: 3 x 120Wp

(not expandable)

Efficiency: 18%

Sealed and hailproof,

Life expectancy: approx. 25 years.

The high-quality solar cell technology also ensures charging on cloudy days.

Dimensions: approx. 1010 x 670 x 35mm

The system is delivered ready for connection and consists of the following components:

3 PV solar modules,

1 inverter

cables to the solar modules.

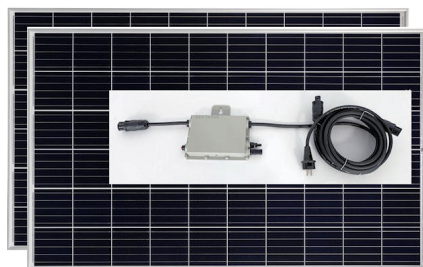
Assembly instructions

Mounting material for solar module for attachment to balcony railing, wall, roof or on the ground can be found in the accessories.

Weight: 86 kg



Solar Photovoltaic Balcony Power System Kit 230V 660W



PV solar power generation Island system with 2 solar modules 330W and inverter 600 W for direct grid injection. S-SOLBK60-2

Solar-powered power supply system for generating 230V alternating voltage. The system must be registered with the energy supplier. There are no operating costs or feed-in costs.

Inverter:

With reactive power feed-in (according to VDE-AR-N 4105)

Output voltage: 230V 50 Hz

Single-phase

Modified sine wave

Continuous load: 580 W

Short-term peak load: 600 W

Efficiency: 98

Short circuit protection and overload cut-off.

Standby power consumption: only 2W

MPPT efficiency: 99

Noise generation: < 25dB very quiet

Cooling: convection

Ambient temperature -25°C to +55°C

Housing: aluminium

Protection class: IP65

Dimensions: Very compact: L 200mm, W 80mm, H 64mm

Solar modules:

Monocrystalline

Power: 2 x 330Wp

(not expandable)

Efficiency: 19.5 %

Sealed and hailproof,

Life expectancy: approx. 25 years.

The high-quality solar cell technology also ensures charging on cloudy days.

Dimensions: approx. 1684 x 1002 x 35 mm

The system is delivered ready for connection and consists of the following components:

2 PV solar modules,

1 inverter

cables to the solar modules.

Assembly instructions

Mounting material for solar module for attachment to balcony railing, wall, roof or on the ground can be found in the accessories.

Weight: 86 kg

Photovoltaic Solar Modules



Flexible Solar Panel 12V 100W

Flexible solar panel 100 Watt monocrystalline for boat, camping and mobile applications. Photovoltaic module 100 Wp.

Ideal for campers, boats, vehicles, odd-shaped surfaces or temporary use.

Solar cell hail-resistant with UV-resistant seal.

High-quality module technology ensures charging even on cloudy days.

Efficiency: > 20%

32 cells with 125 x 125 mm size

Life expectancy approx. 10 years.

For 12 Volt system voltage.

Module nominal voltage 18.3V

No-load voltage 22.5V

Nominal cell current: 5.48A @ max. 50°C

Short-circuit current: 5.92A

Operating temperature: -40°C to +80°C



Dimensions: Approx. 1153 x 537 x 2.5mm



On highly stable carrier foil with 4 eyelets for bracing.




Bending angle: max. 50°

Stable connection box with 2 connection cables 90cm with connectors.


S-SOLF1210

		<h2>Semi Flexible Solar Panel 12V 100W</h2> <p>Flexible solar panel 100 Watt monocrystalline. Reinforced with thin aluminium sheet. For boat, camping and mobile applications. Photovoltaic module 100 Wp. Only a few in stock.</p>	<p>Ideal for camping mobile, boat, vehicles, odd surfaces or temporary use. Solar cell hail-resistant with UV-resistant sealant. This modern cell technology has a high degree of efficiency and allows charging also at cloudy weather.</p> <table><tr><td>Efficiency:</td><td>> 17%</td></tr><tr><td>Lifespan</td><td>aprx. 10 years</td></tr></table> <p>For 12 Volt system voltage.</p> <table><tr><td>Max. voltage</td><td>500 V</td></tr><tr><td>Nominal voltage</td><td>18.2V</td></tr><tr><td>Idle voltage</td><td>21.5V</td></tr><tr><td>Nominal current</td><td>5.49A</td></tr><tr><td>Short circuit current</td><td>6.01A</td></tr><tr><td>Inverse current:</td><td>max. 15A</td></tr><tr><td>Operating temperature:</td><td>-40°C bis +85°C</td></tr><tr><td>Surface:</td><td>Plain soft PC</td></tr><tr><td>Dimensions:</td><td>Approx 1240 x 515 x 2mm</td></tr></table> <p>With 4 stable eyelets for bracing.</p> <p>Bending angle: max. 50°</p> <p>Robust junction box with 2 cables 70cm and connectors.</p> <p>S-SOLFA1210</p>	Efficiency:	> 17%	Lifespan	aprx. 10 years	Max. voltage	500 V	Nominal voltage	18.2V	Idle voltage	21.5V	Nominal current	5.49A	Short circuit current	6.01A	Inverse current:	max. 15A	Operating temperature:	-40°C bis +85°C	Surface:	Plain soft PC	Dimensions:	Approx 1240 x 515 x 2mm
Efficiency:	> 17%																								
Lifespan	aprx. 10 years																								
Max. voltage	500 V																								
Nominal voltage	18.2V																								
Idle voltage	21.5V																								
Nominal current	5.49A																								
Short circuit current	6.01A																								
Inverse current:	max. 15A																								
Operating temperature:	-40°C bis +85°C																								
Surface:	Plain soft PC																								
Dimensions:	Approx 1240 x 515 x 2mm																								

Solar Charge Controllers		
	Solar Battery Charge Controller MPPT 20A	<p>PV charge controller with automatic voltage adaption to have up to 30% more solar energy. S-SOLR31</p>
	Solar Charge Controller MPP Tracker 30A 12V-24V	<p>PV charge controller with automatic voltage elevation to have up to 30% more solar energy. S-SOLR32</p>
	Solar Charge Controller MPP Tracker 60A negative	<p>Battery charge controller with MPP tracker for up to 30% higher energy production from the solar module. For battery system 12V - 48V. S-SOLR34N</p> <p>Intelligent MPP (Maximum Power Point Tracking): The efficiency of the solar modules is utilised up to 30% better. Due to the automatic voltage adjustment, the maximum possible power is always taken from the solar cells. This means that the maximum efficiency of the solar panel is always exploited. Charge status display with LCD display Load status display Automatic load switching at low battery voltage Battery voltage selectable: 12V, 24V, 36V, 48V Module voltage: max. 145V Max. Battery charging current 60A Max. load output Load output: 20A Max. Module power: 2700W/ 24V or 4000W/ 48V Battery. Integrated temperature compensation Interface RS232 and RS485 Concealed terminals (up to 16 mm²) Fully electronically protected Protection class: IP32 Dimensions: 285*205*93mm Weight: 4 kg</p>
	Solar Charge Controller MPP Tracker 80A 12V - 60V	<p>PV charge controller with automatic voltage elevation to have up to 30% more solar energy. S-SOLR35</p> <p>Intelligent MPP (maximum power-point tracking): up to 30% more efficient power production of the solar modules. Charge state visualisation with LCD Display. Load control, Automatic power-off at low battery power, Battery voltage selectable: 12V, 24V, 36V, 48V Module voltage: max. 150V max. module current 80 amp Integrated temperature compensation. Covered connection terminals (max. 16 mm²) Completely electronic protected Weight: 6 kg</p>

	Remote Programmer for Solar Controller WiFi	<p>For changing the lighting times according to your wishes. Universal programmer for WLAN-controlled luminaire control systems. S-SOLS29-5</p> <p>With lights test function, Setting the lighting times blocks Setting the dimming 10 - 100% Reading the current lights and battery parameters Reading the memory for the last days. Required for operation: 2x AA battery Weight: 0 kg</p>
	Remote Programmer for Solar Controller Hybrid	<p>For changing the lighting times according to your wishes. Universal programmer for WLAN-controlled luminaire control systems. S-SOLS29-6</p> <p>With lights test function, Setting the lighting times blocks Setting the dimming 10 - 100% Reading the current lights and battery parameters Reading the memory for the last days. Required for operation: 2x AA battery Weight: 0 kg</p>
	IR Remote Programmer for Solar Controller	<p>For changing the lighting times according to your wishes. Universal programmer for infrared luminaire controls. S-SOLS29-A</p> <p>With lights test function, Setting the lighting times blocks Setting the dimming 10 - 100% Reading the current lights and battery parameters Reading the memory for the last days. Required for operation: 2x AA battery Weight: 0 kg</p>

Solar lighting for garden shed, stable, weekend house

	Solar Lighting System for Home and Hut 20W	<p>Lighting system with solar modules for small houses and huts in Africa, Asia and South America. S-SOLUG86-2</p> <p>Complete photovoltaic system package with lamps, solar module, battery and cables. Ready to plug in - quickly assembled - immediately ready for use.</p> <p>System voltage: 12V Capacity: 200 Wh Solar panel 25Wp polycrystalline</p> <p>Available with two different battery characteristics: AGM battery 12V/17Ah maintenance-free (service life: approx. 5 years) or (on request) LiFePO4 battery 12V 17Ah (service life: approx. 10 years)</p> <p>Solar charge controller 12V/5A, 3 pcs. LED lamps 12V / 6W 3 sets lamp holder E27 & chain switch 5m cable 8 m cable with plug for solar panel Socket for PV input & lights with 5V USB connection for charging a mobile phone with fuse for full protection</p> <p>Battery box: Steel housing Dimensions: L240 x W130 x H215mm</p> <p>Each system is packed in 1 carton With carton: 41 x 26.5 x 35.5 cm 6.5 kg 30 sets / pallet, 1.35 cbm, 325 kg</p> <p>Accessories at extra charge: FM radio Weight: 8 kg</p>
---	---	---



Solar lighting 6 lamps and power for small house



Lighting with solar panel 200W for homes in Africa, Asia and South America. S-SOLUG86-6

Complete package with LED lamps, solar panels, batteries and solar controller.
Capacity: 2400 Wh
Easy to install,
including set-up plan and:
solar panel 200Wp monocrystalline
AGM longlife battery 12V/150Ah maintenance-free (life time: aprx. 5 years)
Stable control box with solar charge controller 12V/15A and included batteries.
6 pcs. 12V/6W LED bulbs
3 pcs. E27 light fitting & chain switch for DC light with 5m cable
3 pcs. E27 light fitting & chain switch for DC light with 10m cable
8m solar cable with plug

Steel power box:
with PV input socket
6 pcs. lamp output connectors
USB outlet 5V for cellphone charging
including adaptor cable for all common mobile phone models.
with cigarette light socket for small power inverter
Fuse for full protection
voltmeter for battery voltage display
Weight: kg

Solar Power Supplies for Water Pumping



Photovoltaic Solar Water Heating System 1kW

Hot water heater with solar energy through PV modules. Cheaper than solar thermal and easier in installation.
S-SOLW410



Solar Well Pump 30m 600 L/h



Solar WaterPump Submersible pump 30 - 50 metres deep. For drinking water or irrigation.
S-SOLW650

Complete system for water supply in equatorial and sunny countries. This pump delivers drinking water from a pump shaft up to 30 metres deep to the surface.
The pump is lowered into the shaft or pipe and remains under water. The control unit is included.
With the enclosed switch, the pump can be switched on and off only when needed.

General technical data:
Nominal delivery depth: 30 metres
Maximum delivery depth: 50 metres
Maximum delivery rate: 600 litres per hour

Pump data:
Robust diaphragm pump
Cylindrical design: Diameter 95mm, height 340mm
Material: Stainless steel
Max. Sand volume: 0,1% (not for waste water)
Water outlet: 1/2" internal thread
Pump voltage: 12V DC
Pump power: 120-150W

Solar Power Supply Data:
The high quality solar panel is polycrystalline for high output even in slightly overcast conditions.
With stable aluminium frame, weatherproof and dustproof sealed, as well as impact resistant, life expectancy approx. 25 years.
PV Power: 240W
Max. Input voltage 20 Volt DC (open-circuit voltage from solar module!)
Switch-off voltage approx. 10V - max. pump power 150W
Max. output current 10 A
Intrinsic current consumption approx. 25mA
Ambient temperature range: 0°C to +60°C
Output short-circuit protected
Overtemperature cut-off at approx. 80°C
The area of the solar module is approx. 1 sqm.

Included in the set:
Pump
Solar module
20 metres of 1/2 inch pump hose
Control unit, hand switch, cable and clamps.
Weight: 45 kg



Solar Well Pump 40m 3500 L/h



Photovoltaic solar water pump for deep wells up to 40 metres. For drinking water or irrigation.
S-SOLW653

Complete system for water supply in equatorial and sunny countries. This pump delivers drinking water from a pump shaft up to 40 metres deep to the surface. The pump is lowered into the shaft or pipe and remains under water. 2 water level sensors prevent the pump from running dry if it is not in the water. The control unit supplied protects the pump and provides a voltage increase during solar operation, e.g. in case of reduced irradiation. When the sun shines, the pump starts automatically and pumps continuously until sunset. With the enclosed switch, the pump can also be switched on and off only when needed. The high-quality solar modules are monocrystalline for maximum output even in slightly overcast conditions. They have sturdy aluminium frames, are weatherproof and sealed dustproof, as well as impact resistant, life expectancy approx. 25 years.

General technical data:

Maximum conveying depth: 40 metres
Nominal delivery depth: 30 metres
Maximum delivery rate: 3500 litres per hour
Cylindrical design of the pump: diameter 98.5mm, height 540mm
Material: stainless steel, with dry-running protection
Water connection: 1".
Control with MPP tracker for 30% more energy yield
Max. Input voltage 45 Volt DC (open circuit voltage from solar module!)
Automatic frequency control for speed control, for optimum energy utilisation depending on solar module voltage.
Automatic switch-off in case of undervoltage
Pump voltage: 230V AC 50Hz
Pump output: 750W
Max. output current 3.3 A
Own current consumption approx. 25mA
Ambient temperature range: 0°C to +60°C
Output short-circuit protected
Overtemperature cut-off at approx. 80°C
The area of the solar modules is approx. 10qm

Included in the set:

Robust diaphragm pump
5 solar modules with sturdy aluminium frames.
35 metres of pump hose
Control unit, hand switch, cable and clamps.
Weight: 100 kg



Solar Power Supply for Water Pumps 4kW



Independent power generation for operating pumps max. 3 hp. Complete package with solar modules and inverter.
S-SOLW730

Solar-powered PV energy supply stand-alone system for generating 230V alternating voltage 50Hz.

Possible applications: Irrigation, fields, vines, meadows, drainage of construction sites, filling up water tanks.

Technical data:

The system supplies pump current only during the day.

For slow pump operation in the early morning hours and for safe start-up of the pumps,

the system is equipped with a VFC control, which can start the motor with a lower frequency and therefore a lower speed.

Ambient temperature: -30°C to + 60°C

Suitable for 3-phase motors 220V - 230V / 380V - 400V / 50Hz-60Hz up to 4 kW (max. 5hp).

Solar module specifications:

Manufactured in Germany

Monocrystalline silicon with very high efficiency

Hardened protective glass, sealed and hail-resistant

The high-quality solar cell technology also ensures pump operation on cloudy days.

Efficiency: > 19%

Output: 4000Wp

Life expectancy: approx. 25 years

20 years 80% performance guarantee

10 years 90% performance guarantee

* except in case of mechanical impact

The required area for mounting the solar modules is approx. 40sqm.

Inverter and motor control:

MPPT Maximum Power Point Tracking for up to 30% more power from the solar modules.

Maximum power output 4000W

Short-term peak load 5 kVA (starting current)

Output voltage: 230V /400V

Three-phase

Frequency: 1 - 50 Hz, pure sine wave

Efficiency: 98

Short circuit protection and overload circuit.

Standby power consumption only 6W

Temperature range: 0 - 55°C

Housing: aluminium

Ready for connection with construction plan and:

14 monocrystalline solar modules,

Solar Inverter,

Mounting triangles for solar modules on the flat roof or on the ground, cables and clamps.

When ordering, we still need information on the planned installation location so that we can supply the appropriate brackets to hold the modules securely even during storms.

Weight: 330 kg



Solar Power Supply for Water Pumps 5kW



Independent photovoltaic power supply. Isle system to operate water pumps max. 4 HP. Completed package with PV-modules and inverter. S-SOLW732

Solar powered PV power supply island system for generating 230V AC 50Hz.

Applications: irrigation, fields, vines, meadows, drainage of construction sites, filling of water tanks.

Technical specifications:

The system supplies pump power only during the day.

For slow pump operation in the early morning hours and for safe starting of the pumps,

the system is equipped with a VFC control, which can start the engine at low frequency and therefore lower speed.

Ambient temperature: -30 ° C to + 60 ° C

Suitable for 3-phase motors 220V - 230V / 380V - 400V / 50Hz-60Hz to 4kW (max 5PS)

Solar module specifications:

Monocrystalline silicon with very high efficiency tempered protective glass, sealed and hailproof

The high quality solar cell technology also ensures pump operation in cloudy skies.

Efficiency: > 16%

Power: 4800Wp

Life expectancy: approx. 25 years

20 years 80% performance guarantee

10 years 90% performance guarantee

* except in the case of mechanical impact

The required area for mounting the solar modules is about 40 square meters.

Inverter:

MPPT Maximum Power Point Tracking for up to 30% more power from the solar modules.

Maximum extraction power 4000W

Short-term peak load 5 kVA (starting current)

Output voltage: 230V / 400V

Three Phase

Frequency: 1 - 50 Hz, pure sine wave

Efficiency: 98%

Short-circuit protection and overload cut-off.

Standby power consumption only 6W

Temperature range: 0 - 55 ° C

Housing: aluminum

Ready for connection with manual and:

16 monocrystalline solar modules,

Solar Inverter,

Riser triangles for solar modules on a flat roof or on the ground,

Cables and terminals.

When ordering, we still need information on the planned installation site, so we can provide the appropriate brackets to keep the modules safe even during storms.

Weight: 357 kg



Solar Power Supply for Water Pumps 7.8kW



Independent photovoltaic power supply. Isle system to operate water pumps max. 10 HP. Completed package with PV-modules and inverter. S-SOLW734

Solar powered PV power supply island system for generating 230V AC 50Hz.

Applications: irrigation, fields, vines, meadows, drainage of construction sites, filling of water tanks.

Technical specifications:

The system supplies pump power only during the day.

For slow pump operation in the early morning hours and for safe starting of the pumps,

the system is equipped with a VFC control, which can start the engine at low frequency and therefore lower speed.

Ambient temperature: -30 ° C to + 60 ° C

Suitable for 3-phase motors 220V - 230V / 380V - 400V / 50Hz-60Hz to 7.5kW (max 10PS)

Solar module specifications:

Monocrystalline silicon with very high efficiency

tempered protective glass, sealed and hailproof

The high quality solar cell technology also ensures pump operation in cloudy skies.

Efficiency: > 16%

Power: 7800Wp

Life expectancy: approx. 25 years

20 years 80% performance guarantee

10 years 90% performance guarantee

* except in the case of mechanical impact

The required area for mounting the solar modules is about 70 square meters.

Inverter:

MPPT Maximum Power Point Tracking for up to 30% more power from the solar modules.

Maximum withdrawal capacity 8000W

Short-term peak load 10 kVA (starting current)

Output voltage: 230V / 400V

Three Phase

Frequency: 1 - 50 Hz, pure sine wave

Efficiency: 98%

Short-circuit protection and overload cut-off.

Standby power consumption only 6W

Temperature range: 0 - 55 ° C

Housing: aluminum

Ready for connection with manual and:

26 monocrystalline solar modules,

Solar Inverter,

Riser triangles for solar modules on a flat roof or on the ground,

Cables and terminals.

When ordering, we still need information on the planned installation site, so we can provide the appropriate brackets to keep the modules safe even during storms.

Weight: 570 kg



Solar Power Supply for Water Pumps 10kW Africa



Independent photovoltaic power supply. Solar system to operate water pumps max. 6.5 HP. Completed package with PV-modules, batteries and inverter. S-SOLW762

Solar-powered PV energy supply stand-alone system for the generation of 230V / 400V alternating voltage.

Ready for connection with construction plan and:

24 monocrystalline solar modules, sealed and dustproof, life expectancy approx. 25 years.

Module output 8kW

The high-quality solar cell technology also guarantees charging on cloudy days.

Solar charge controller with overcharge protection and deep discharge protection.

4 / 8 solar batteries AGM 12 Volt 200Ah longlife.

1 inverter 230V / 400V 50Hz, 3-phase, 10000 Watt continuous load, pure sine wave, interference-free.

Short-term peak load (starting current) 15 kW.

The system supplies pump current day and night.

Operating time with fully charged batteries 24 / 48 / 72 hours at 3500 Watt continuous consumption.

The higher the consumption, the shorter the operating time will be.

(Continuous operation 3 - 4kW)

The required area for mounting the solar modules is approx. 42sqm.

Inverter and batteries should be installed in a closed room (cellar, attic or hut).

Incl. rails and mounting clamps for solar modules on pitched roof, cables and clamps.

When ordering, we still need information on the planned installation location so that we can supply the appropriate brackets to hold the modules securely even during storms.

Weight: 850 kg